



**PC205-10MO
EARTHWORK MASTER**




Engine Power : 148HP @ 2000 rpm | Operating Weight : 20,300 - 20,900 kg | Bucket Capacity : 0.85-1 m³




Higher Digging Forces




Maintenance Cost
17% Lower*



Fuel Consumption
upto 18% Lower*



Unmatched Reliability



Superior Durability & Versatility

*compared to PC210-8

Higher Durability



Easy Maintenance



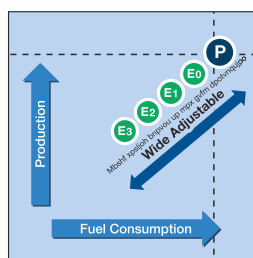
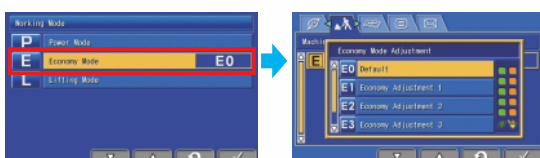
Centralised access to all filters

Komatsu's Remote Monitoring & Management

Latest Generation **KOMTRAX**



Optimized performance in various site conditions



Safety & Comfort



*Images may include Optional Equipment



ENGINE

Model Komatsu SAA4D107E-1
 Type Water-cooled, 4-cycle, direct injection
 Aspiration Turbocharged, aftercooled
 Number of cylinders 4
 Bore 107 mm
 Stroke 124 mm
 Piston displacement 4.46 L
 Horsepower:
 SAE J1995 Gross 110 kW 148 HP
 ISO 9249 / SAE J1349 Net 103 kW 138 HP
 Rated rpm 2000 min⁻¹
 Fan drive method for radiator cooling Mechanical
 Governor All-speed control, electronic
 EU Stage 3A emission equivalent.

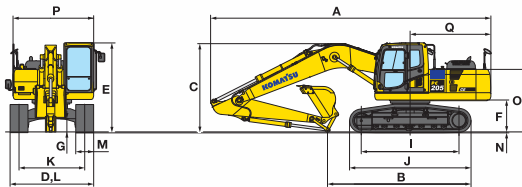


HYDRAULICS

Type HydrauMind (Hydraulic Mechanical Intelligence New Design) system, closed-center system with load sensing valves and pressure compensated valves
 Number of selectable working modes 6
 Main pump:
 Type Variable displacement piston type
 Pumps for Boom, arm, bucket, swing, and travel circuits
 Maximum flow 439 L/min
 Supply for control circuit Self-reducing valve
 Hydraulic motors:
 Travel 2 x axial piston motor with parking brake
 Swing 1 x axial piston motor with swing holding brake
 Relief valve setting:
 Implement circuits 37.3 MPa 380 kgf/cm²
 Travel circuit 37.3 MPa 380 kgf/cm²
 Swing circuit 28.9 MPa 295 kgf/cm²
 Pilot circuit 3.2 MPa 33 kgf/cm²
 Hydraulic cylinders:
 (Number of cylinders bore x stroke x rod diameter)
 Boom 2120 mm x 1334 mm x 85 mm
 Arm 1135 mm x 1490 mm x 95 mm
 Bucket 1115 mm x 1120 mm x 80 mm



DIMENSIONS



Arm Length	2410mm	2925 mm
A Overall length	9530mm	9485 mm
B Length on ground (Transport)	5700mm	4815 mm
C Overall height (To top of boom)	3190mm	3005 mm
D Overall width		2800 mm
E Overall height (To top of cab)		3040 mm
F Ground clearance, counterweight		1085 mm
G Ground clearance (Minimum)		440 mm
H Tail swing radius		2835 mm
I Track length on ground		3275 mm
J Track length		4070 mm
K Track gauge		2200 mm
L Width of crawler		2800 mm
M Shoe width		600 mm
N Grouser height		26 mm
O Machine cab height		2095 mm
P Machine cab width		2710 mm
Q Distance, swing center to rear end		2795 mm



SWING SYSTEM

Drive methodHydrostatic
 Swing reductionPlanetary gear
 Swing circle lubrication Grease-bathed
 Service brake Hydraulic lock
 Holding brake/Swing lock Mechanical disc brake
 Swing speed 11.5 min⁻¹



UNDERCARRIAGE

Center frame X-frame
 Track frame Box-section
 Seal of track Sealed track
 Track adjuster Hydraulic
 Number of shoes (Each side) 45
 Number of carrier rollers 2 each side
 Number of track rollers (Each side) 7

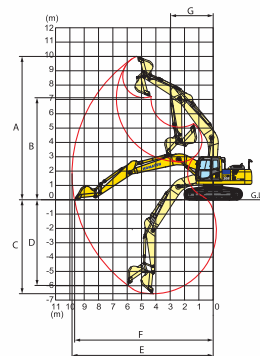


DRIVES AND BRAKES

Steering control Two levers with pedals
 Drive methodHydrostatic
 Maximum drawbar pull 178 kN 18200 kgf
 Gradeability 70%, 35°
 Maximum travel speed: High 4.9 km/h
 (Auto-shift) Mid 4.1 km/h
 (Auto-shift) Low 3.0 km/h
 Service brake Hydraulic lock
 Parking brake Mechanical disc brake



WORKING RANGE



Arm Length	2410mm	2925 mm
A Max. digging height	9795mm	10000 mm
B Max. dumping height	6960mm	7110 mm
C Max. digging depth	6000mm	6620 mm
D Max. vertical wall digging depth	5080mm	5980 mm
E Max. digging reach	9390mm	9875 mm
F Max. digging reach at ground level	9195mm	9700 mm
G Min. swing radius	3080mm	3040 mm
SAE J1179 Rating	Bucket digging force at power max.	138 kN 14100 kgf
	Arm crowd force at power max.	124 kN 12600 kgf
ISO 6015 Rating	Bucket digging force at power max.	149 kN 15200 kgf
	Arm crowd force at power max.	127 kN 13000 kgf



Marketed & Serviced by:

L&T Construction & Mining Machinery

Larsen & Toubro Limited

1st Floor Lakshminarayan Complex 10/1, Palace Road, Bangalore-560 052 Tel: 080 40401700/ 900

Visit: www.Lntcmb.com



L&T Construction & Mining Machinery



Larsentoubro.cmb

Delhi (011) 40819500 | Kolkata (033) 44002433/22831442 | Pune (020) 48544259 | Jaipur (0141) 4385900

Nagpur (0712) 6606441/2260025 | Hyderabad (040) 47575064 | Chennai (044) 40706864

Scan QR Code
Visit our website



Lntcmb.com

EQUIP-CARE

Customer Care Number

1800 833 9990